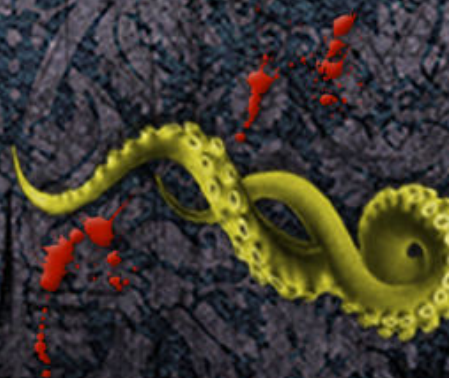


ELDER SIGN™



JUST FOR LAUGHS





Duke

The Good Boy



Part Bloodhound

Whenever Duke gains a common item, unique item, or ally after setup, he also receives a clue token.

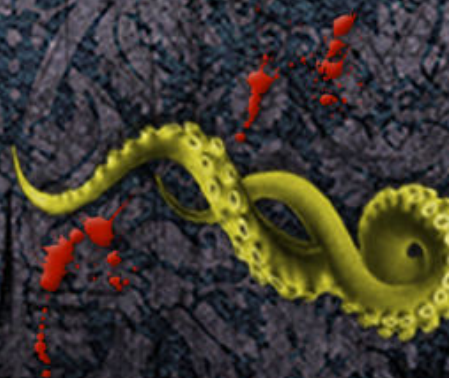
Starting Items



ELDER SIGN™



JUST FOR LAUGHS





Body of a Yithian

The Captive in Another Form



Stolen Mind

*At setup, take an investigator at random and adopt their Name and Starting Items, then apply the modifiers above to their sanity and stamina.

Once per turn, you may choose 1 die and change its result to any other result on that die.

Starting Items

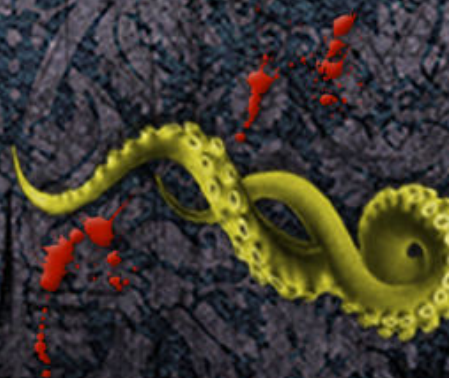
???



ELDER SIGN™



JUST FOR LAUGHS





8L-08 Smith

The Totally Normal Human



Doom Devourer

Once per day, at the start of his turn, 8L-08 may spend 3 clues to remove 1 doom token from the doom track.

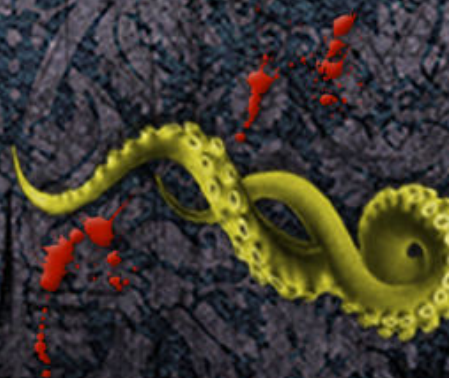
Starting Items



ELDER SIGN™



JUST FOR LAUGHS





Benoit Blanc
The Renowned Detective



Knives Out

Each time Benoit gains an ally, he may gain a unique item instead.

Each time another investigator gains a clue, Benoit also gains 1 clue.

Starting Items

